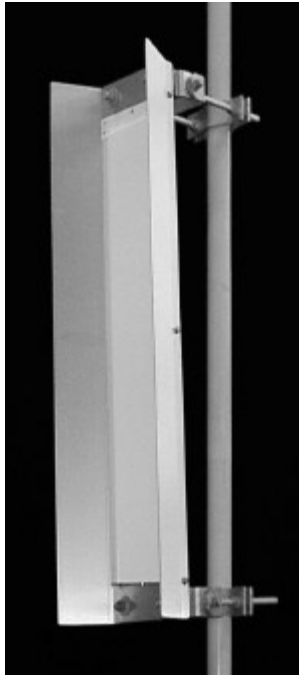


## TA-1404-40 Sector

### 1425-1535 MHz



The TA-1404-40 is a vertically polarized 40 degree sectoral antenna. The antenna consists of a broadband dipole array enclosed in an aluminum cavity with a UV stabilized ASA radome for superior weatherability. The antenna is at DC ground to aid in lightning protection.

#### Electrical Specifications

**Frequency Range:** 1425-1535 MHz  
**Gain:** 16.5 dBi  
**VSWR:** 1.5:1 max.  
**Front to Back Ratio:** 20 dB min. 25 typical  
**Polarization:** Vertical  
**Power Rating:** 250 Watts  
**H-Plane Beamwidth:** 40 degrees  
**E-Plane Beamwidth:** 16 degrees  
**Electrical Downtilt:** 0, 2, 4, 6 degrees  
**Cross Pol. Discrimination:** 20 dB min.  
**Impedance:** 50 ohms nominal  
**Termination:** N female (7/16 optional)

Typical mid band values. (For details , contact factory)  
 Specifications subject to change without notice

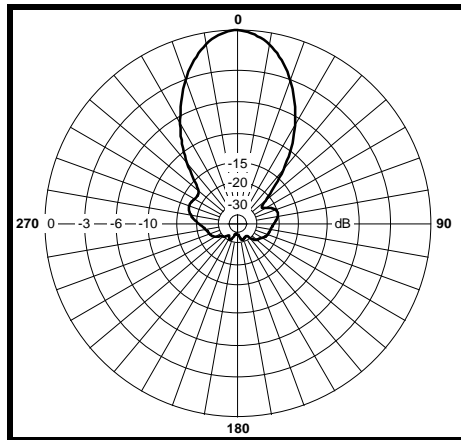
#### Mechanical Specifications

**Length:** 40 in. (1016 mm)  
**Width:** 11.5 in. (292 mm)  
**Depth:** 6 in. (152 mm)  
**Weight (incl. Clamps):** 25 lb. (11.4 kg)  
**Rated Wind Velocity:** 125 mph (200 km/h)  
**Hor. Thrust at rated wind:** 199 lb. (90 kg)  
**Mechanical Tilt:** 0 - 15 degrees (optional)  
**Mounting (O.D.):** 1.75 - 4.0 in. (44.5 - 102 mm)

#### Materials

**Radiating Elements:** Irridited aluminum  
**Reflector:** Irridited aluminum  
**Radome:** Gray UV stabilized ASA  
**Clamps:** HDG steel

H-Plane



E-Plane

