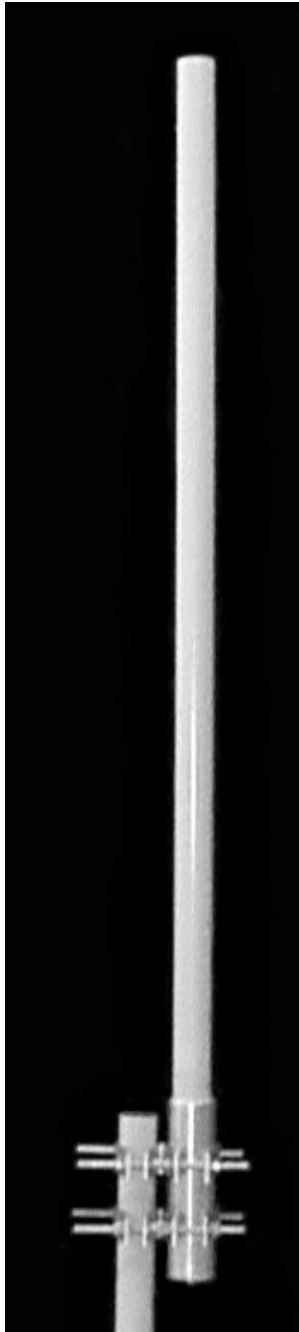


TA-1450-2 Omnidirectional 1425-1535 MHz



The TA-1450-2 is a 12 dBi omnidirectional antenna consisting of center fed collinear dipoles in a UV stabilized fiberglass radome. The antenna is designed for severe weather conditions and is at DC ground to aid in lightning protection. Due to the very narrow elevation beamwidth, TIL-TEK recommends that this antenna be used on stable platforms and where other options are not practical.

Electrical Specifications

Frequency Range: 1425-1535 MHz
Gain: 12 dBi
VSWR: 1.5:1 max.
Polarization: Vertical
Power Rating: 250 Watts
H-Plane Beamwidth: 360 degrees
E-Plane Beamwidth: 4 degrees
Electrical Downtilt: 0, 2 degrees
Cross Pol. Discrimination: 20 dB min.
Impedance: 50 ohms nominal
Termination: N female (7/16 optional)

Typical mid band values. (For details , contact factory)
 Specifications subject to change without notice

Mechanical Specifications

Length: 136 in. (3455 mm)
Diameter: 2.25 in. (57 mm)
Weight (Incl. Clamps): 28 lb. (12.7 kg)
Rated Wind Velocity: 125 mph (200 km/h)
Hor. Thrust at rated wind: 88 lb. (40 kg)
Mounting (O.D.): 1.75 - 4.0 in. (44.5 - 102 mm)

Materials

Radiating Elements: Copper
Radome: Gray UV stabilized fiberglass
Clamps: HDG steel

E-Plane

