

**Details**

806-896, 824-896, 890-960 MHz

The TA-811-33 is a fixed pattern version of the TA-811 adjustable sector. It is enclosed in an aluminum base and has an ASA UV stabilized radome for superior performance and weatherability. Extremely low side lobes and up to 15 degrees of electrical downtilt make this a remarkably versatile antenna.

**Electrical Specifications**

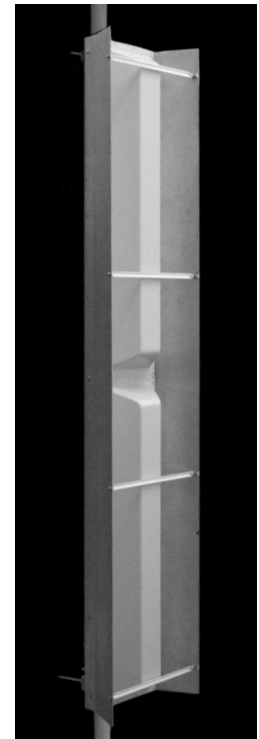
<b>Freq Range:</b>	806-896, 824-896, 890-960 MHz
<b>Gain:</b>	17 dbd @ 33°
<b>VSWR:</b>	1.5:1 max. 1.35:1 typical
<b>Front Back:</b>	25 dB min. 30 dB typical
<b>Pol:</b>	Vertical
<b>Power:</b>	500 watts
<b>H Plane BW:</b>	33 degrees
<b>E Plane BW:</b>	8.5 degrees
<b>Electrical Downtilt:</b>	0°, 2°, 4°, 5°, 6°, 8°, 10°, 11°, 13°, 15°
<b>X Pol:</b>	20 dB min.
<b>Imp:</b>	50 ohms nominal
<b>Termination:</b>	N female (7/16 optional)

**Mechanical Specifications**

<b>Length:</b>	96 in. (2438 mm)
<b>width:</b>	30 in. (762 mm)
<b>Depth:</b>	13 in. (330 mm)
<b>weight:</b>	72 lb. (33 kg)
<b>Rated Wind Vel:</b>	125 mph (201 km/h)
<b>Hor Thrust:</b>	1121 lb. (508 kg)
<b>Mech tilt:</b>	0 degrees fixed
<b>Mounting Pipe:</b>	1.75 - 4.5 in. (44.5 - 114 mm)

**Material Specifications**

<b>Radiating Elements:</b>	Irridited aluminum
<b>Reflector:</b>	Irridited aluminum
<b>Radome:</b>	Gray UV stabilized ASA
<b>Clamps:</b>	HDG and EDZ steel



**Antenna Patterns**

