

Details

902-928 MHz

The TA-926H-4-90 is a horizontally polarized 90 degree sectoral antenna. It consists of a broadband dipole array on an aluminum base with a UV stabilized ASA radome for superior weatherability. The antenna is at DC ground to aid in lightning protection.

Electrical Specifications

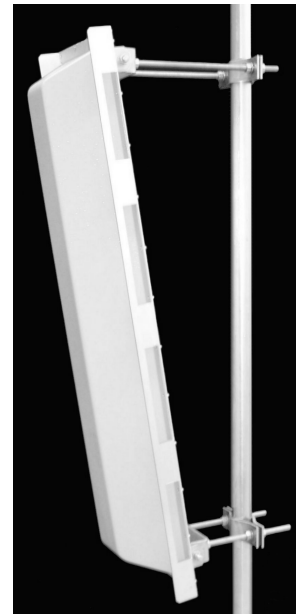
Freq Range:	902-928 MHz
Gain:	10 dBi
VSWR:	1.5:1 max.
Front Back:	15 dB min
Pol:	Horizontal
Power:	200 watts
H Plane BW:	19°
E Plane BW:	85°
X Pol:	20 dB min
Imp:	50 ohms nominal
Termination:	N female

Mechanical Specifications

Length:	48 in. (1220 mm)
Width:	13.5 in. (343 mm)
Depth:	8 in (203 mm)
Weight:	25 lb. (11.3 kg)
Rated Wind vel:	125 mph (200 km/h)
Hor Thrust:	280 lb. (127 kg)
Mech tilt:	0 - 13 degrees
Mounting Pipe:	1.75 - 4.0 in. (44.5 - 102 mm)

Material Specifications

Radiating Elements:	Plated copper on PCB
Reflector:	Irridited aluminum
Radome:	Gray UV stabilized ASA
Clamps:	EDZ steel



Antenna Patterns

