

LOW VISUAL IMPACT – TRI SECTOR

DUAL BAND – 3x (BAND 800+900 + BROADBAND 1710 – 2170 MHz)

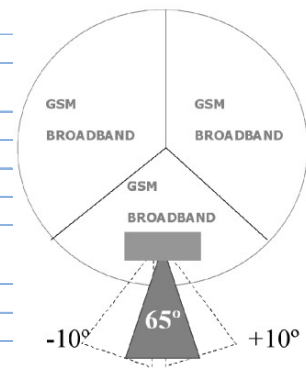
SBLM-600TV-AV

3 X (Band 800-900 + Broadband 1710 - 2170)	
790 - 960	1710-2170
H67° V11°	H64° V6.6°
Variable Tilt 0° - 10°	Variable Tilt 2° - 12°

ELECTRICAL SPECIFICATIONS

	3 X BAND 800-900	3 X (BROADBAND 1710 – 2170 MHz)
Antenna Model	SBLM-600TV-AV	
Polarization	± 45°	
Frequency	3 X (790 X 960)	3 X (1710 – 2170)
	790 - 960	1710 - 2170
Horizontal Beamwidth	67°	64°
Vertical Beamwidth	11°	6.6°
Gain (dBi)	15.5	17
Vertical Electrical Tilt	VARIABLE 0°-10°	VARIABLE 2°-12°
Variable Azimuth*	-10° to +10°	
Upper Sidelobe Suppression for the 1 st lobe above main beam (dB)	16	16
Front-to-Back Ratio @ 180° ± 20° (dB)	> 25	> 25
VSWR	< 1.5 : 1	< 1.5 : 1
Cross Polar Ratio @ ± 60° (dB) <i>Typically</i>	> 8	> 8
Isolation between Ports (dB)	> 30	> 30
Interband Isolation (dB)	> 40 (790-960)//(1710-2170)	
Maximum Power Per Input (W)	500	250
Intermodulation (dBc)	< - 150	
Impedance (Ω)	50	

Tri-Sector
configuration
with Variable
Azimuth



MECHANICAL SPECIFICATIONS

Connectors	12 X 7/16 Female	
Connector Position	Bottom	
Survival Wind Speed	km/h (mph)	200 (125)
Windload		
N @ 160 km/h	(lbs @100 mph)	770 (174)
Radome Color	Grey, paintable	
Humidity	100%	
Antenna Weight	kg (lbs)	98 (216)
Antenna Dimension	Antenna Size: 2045 X 505 (81 X 20)	
mm (in) H X Diam	Service Module: 390 x 510 (15 X 20)	

* Fixed Azimuth optional

