

# LOW VISUAL IMPACT – TRI SECTOR

## 3x (BAND 900 + 2x BROADBAND 1710 – 2170 MHz)

### SBTT-400TV-AV

3 X (Band 900 + 2 X Broadband 1710 - 2170)			
870 - 960	2 X 1710 - 2170		
870 - 960	1710-1880	1850-1990	1920-2170
H67° V14°	H65° V6.9°	H63° V6.6°	H60° V6.3°
Variable Tilt 0° - 10°	Variable Tilt 2° - 10°	Variable Tilt 2° - 10°	Variable Tilt 2° - 10°

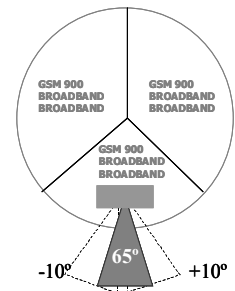
#### ELECTRICAL SPECIFICATIONS

3 X BAND 900

3 X (2 X BROADBAND 1710 – 2170 MHz)

Antenna Model	SBTT-400TV-AV												
Polarization	± 45°												
Frequency	3 X (870 – 960)			3 X (2 X 1710 – 2170)									
	870 - 960	1710 - 1880	1850 -1990	1920 - 2170									
Horizontal Beamwidth	67°	65°	63°	60°									
Vertical Beamwidth	14°	6.9°	6.6°	6.3°									
Gain (dBi)	<b>T0 T5 T10</b> 14.5 14.5 14.5	<b>T0 T5 T10</b> 17.5 17.5 17	<b>T0 T5 T10</b> 17.5 17.5 17	<b>T0 T5 T10</b> 18 18 17.5									
Vertical Electrical Tilt	VARIABLE 0°-10°	VARIABLE 2°-10°	VARIABLE 2°-10°	VARIABLE 2°-10°									
Variable Azimuth*	-10° to +10°												
Upper Sidelobe Suppression for the 1 <sup>st</sup> lobe above main beam (dB)	<b>T0 T5 T10</b> 15 15 15	<b>T0 T5 T10</b> 17 17 16	<b>T0 T5 T10</b> 17 17 16	<b>T0 T5 T10</b> 17 17 16									
Front-to-Back Ratio @ 180° ± 20° (dB)	> 26	> 30	> 30	> 30									
VSWR	< 1.5 : 1	< 1.5 : 1	< 1.5 : 1	< 1.5 : 1									
Cross Polar Ratio @ ± 60° (dB)	> 8	> 8	> 8	> 8									
Isolation between Ports (dB)	> 30	> 30	> 30	> 30									
Interband Isolation (dB)	> 40 (870-960//1710-2170) > 30 (1710-2170//1710-2170)												
Maximum Power Per Input (W)	500			250									
Intermodulation (dBc)	< - 150												
Impedance (Ω)	50												

Tri-Sector configuration with Variable Azimuth



#### MECHANICAL SPECIFICATIONS

Connectors	18 X 7/16 Female
Connector Position	Bottom
Survival Wind Speed km/h (mph)	200 (125)
Windload N @ 160 km/h (lbs @100 mph)	525 (118)
Radome Color	Grey, paintable
Humidity	100%
Antenna Weight kg (lbs)	105 (231)
Antenna Dimension mm (in) H X W X D	Antenna Size: 1420 X 505 (56 X 20 ) Service Module : 295 X 510 (12 X 20)

\* Fixed Azimuth optional

