

LOW VISUAL IMPACT – TRI SECTOR

3x (BAND 900 + 2x BROADBAND 1710 – 2170 MHz)

SBTT-600TV-AV

3 X (Band 900 + 2 X Broadband 1710 - 2170)			
870 - 960	2 X 1710 - 2170		
870 - 960	1710-1880	1850-1990	1920-2170
H63° V10.5°	H64° V6.8°	H62° V6.5°	H60° V6.3°
Variable Tilt 0° - 10°	Variable Tilt 2° - 10°	Variable Tilt 2° - 10°	Variable Tilt 2° - 10°

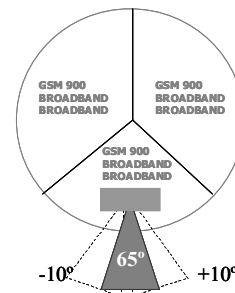
ELECTRICAL SPECIFICATIONS

3 X BAND 900

3 X (2 X BROADBAND 1710 – 2170 MHz)

Antenna Model	SBTT-600TV-AV			
Polarization	± 45°			
Frequency	3 X (870 X 960)		3 X (2 X 1710 – 2170)	
	870 - 960	1710 - 1880	1850 - 1990	1920 - 2170
Horizontal Beamwidth	63°	64°	62°	60°
Vertical Beamwidth	10.5°	6.8°	6.5°	6.3°
Gain (dBi)	T0 T5 T10 15 15.5 15.5	T2 T6 T10 16.5 17 17	T2 T6 T10 17.5 17.5 17.5	T2 T6 T10 17.5 18 17.5
Vertical Electrical Tilt	VARIABLE 0°-10°	VARIABLE 2°-10°	VARIABLE 2°-10°	VARIABLE 2°-10°
Variable Azimuth*	-10° to +10°			
Upper Sidelobe Suppression for the 1 st lobe above main beam (dB)	T0 T5 T10 19 17 15	T2 T6 T10 19 17 15	T2 T6 T10 19 17 17	T2 T6 T10 19 17 17
Front-to-Back Ratio @ 180° ± 20° (dB)	> 27	> 27	> 27	> 27
VSWR	< 1.5 : 1	< 1.5 : 1	< 1.5 : 1	< 1.5 : 1
Cross Polar Ratio @ ± 60° (dB) <i>Typically</i>	> 8	> 8	> 8	> 10
Isolation between Ports (dB)	> 30	> 30	> 30	> 30
Interband Isolation (dB)	> 40 (870-960//1710-2170) > 30 (1710-2170//1710-2170)			
Maximum Power Per Input (W)	500	250		
Intermodulation (dBc)	< - 150			
Impedance (Ω)	50			

Tri-Sector
configuration
with Variable
Azimuth



MECHANICAL SPECIFICATIONS

Connectors	18 X 7/16 Female
Connector Position	Bottom
Survival Wind Speed km/h (mph)	200 (125)
Windload N @ 160 km/h (lbs @100 mph)	770 (174)
Radome Color	Grey, paintable
Humidity	100%
Antenna Weight kg (lbs)	98 (216)
Antenna Dimension mm (in) H X Diam	Antenna Size: 2045 X 505 (81 X 20) Service Module: 390 x 510 (15 X 20)

* Fixed Azimuth optional

