

MULTI BAND PANEL ANTENNA (DUAL)

BAND 850 + BROADBAND 1710 – 2170 MHz

TGAD3-800TV-2EX

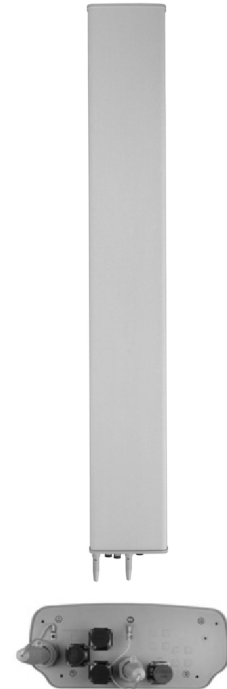
806 - 896	1710 - 2170		
806 - 896	1710 - 1880	1850-1990	1920-2170
H66° V7.9°	H65° V6.6°	H64° V6.6°	H63° V6.4°
Variable Tilt 0° - 8°	Variable Tilt 0° - 10°	Variable Tilt 0° - 10°	Variable Tilt 0° - 10°

ELECTRICAL SPECIFICATIONS

BAND 850

BROADBAND 1710-2170 MHz

Antenna Model	TGAD3-800TV-EX					
Polarization	± 45°					
Frequency	806-896			1710-2170		
	806 - 896	1710 - 1880	1850 - 1990	1920 - 2170		
Horizontal Beamwidth	66°	65°	64°	63°		
Vertical Beamwidth	7.9°	6.6°	6.6°	6.4°		
Gain (dBi)	T0 T4 T8 16.4 16.2 16.1	T0 T5 T10 17.5 17.5 17.1	T0 T5 T10 17.1 17.2 16.7	T0 T5 T10 17.5 17.1 16.5		
Vertical Electrical Tilt	VARIABLE 0°-8°	VARIABLE 0°-10°	VARIABLE 0°-10°	VARIABLE 0°-10°		
Upper Sidelobe Suppression for the 1 st lobe above main beam (dB)	T0 T4 T8 16 15 15	T0 T5 T10 19 17 17	T0 T5 T10 19 19 17	T0 T5 T10 17 17 17		
Front-to-Back Ratio 180° @ ± 20° (dB)	> 28	> 25	> 26	> 26		
VSWR	< 1.5 : 1	< 1.5 : 1	< 1.5 : 1	< 1.5 : 1		
Cross Polar Ratio @ ± 60° (dB)	> 10	> 10	> 10	> 8		
Isolation between Ports (dB)	> 30	> 30	> 30	> 30		
Interband Isolation (dB)	> 40 (824-896//1710-2170)					
Maximum Power Per Input (W)	500	250				
Intermodulation (dBc)	< - 150					
Impedance (Ω)	50					



MECHANICAL SPECIFICATIONS

Connectors	4 X 7/16 Female
Connector Position	Bottom
Survival Wind Speed km/h (mph)	200 (125)
Front Windload N @ 160 km/h (lbs @ 100 mph)	1400 (315)
Lateral Windload N @ 160 km/h (lbs @ 100 mph)	330 (74)
Radome Color	Grey, paintable
Humidity	100%
Antenna Weight kg (lbs)	34 (75)
Antenna Dimension mm (in) H X W X D	2615 x 350 x 145 (103 X 14 X 6)

