

MULTI BAND PANEL ANTENNA (DUAL)

BAND 850 + BROADBAND 1710 – 2170 MHz

TGAD3-800TV-EX

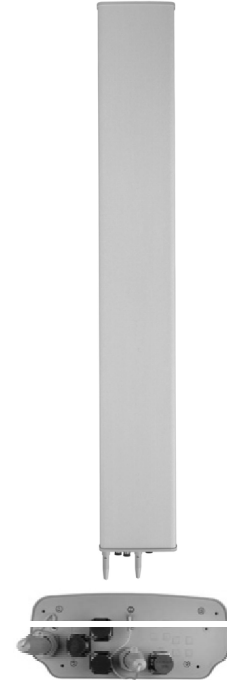
824 - 896	1710 - 2170		
824 - 896	1710 - 1880	1850-1990	1920-2170
H65° V7.9°	H65° V6.6°	H64° V6.6°	H63° V6.4°
Variable Tilt 0° - 8°	Variable Tilt 0° - 10°	Variable Tilt 0° - 10°	Variable Tilt 0° - 10°

ELECTRICAL SPECIFICATIONS

BAND 850

BROADBAND 1710-2170 MHz

Antenna Model	TGAD3-800TV-EX											
Polarization	± 45°											
Frequency	824-896			1710-2170								
	824 - 896	1710 - 1880	1850 - 1990	1920 - 2170								
Horizontal Beamwidth	65°	65°	64°	63°								
Vertical Beamwidth	7.9°	6.6°	6.6°	6.4°								
Gain (dBi)	T0 T4 T8 16.5 16.3 16.1	T0 T5 T10 17.5 17.5 17.1	T0 T5 T10 17.1 17.2 16.7	T0 T5 T10 17.5 17.1 16.5								
Vertical Electrical Tilt	VARIABLE 0°-8°	VARIABLE 0°-10°	VARIABLE 0°-10°	VARIABLE 0°-10°								
Upper Sidelobe Suppression for the 1 st lobe above main beam (dB)	T0 T4 T8 16 15 15	T0 T5 T10 19 17 17	T0 T5 T10 19 19 17	T0 T5 T10 17 17 17								
Front-to-Back Ratio 180° @ ± 20° (dB)	> 28	> 25	> 26	> 26								
VSWR	< 1.5 : 1	< 1.5 : 1	< 1.5 : 1	< 1.5 : 1								
Cross Polar Ratio @ ± 60° (dB)	> 10	> 10	> 10	> 8								
Isolation between Ports (dB)	> 30	> 30	> 30	> 30								
Interband Isolation (dB)	> 40 (824-896//1710-2170)											
Maximum Power Per Input (W)	500			250								
Intermodulation (dBc)	< - 150											
Impedance (Ω)	50											



MECHANICAL SPECIFICATIONS

Connectors	4 X 7/16 Female
Connector Position	Bottom
Survival Wind Speed km/h (mph)	200 (125)
Front Windload N @ 160 km/h (lbs @ 100 mph)	1400 (315)
Lateral Windload N @ 160 km/h (lbs @ 100 mph)	330 (74)
Radome Color	Grey, paintable
Humidity	100%
Antenna Weight kg (lbs)	34 (75)
Antenna Dimension mm (in) H X W X D	2615 x 350 x 145 (103 X 14 X 6)

