

MULTI BAND PANEL ANTENNA (DUAL) BAND 850 + BROADBAND 1710 – 2170 MHz

TGAND3-800TV-EX

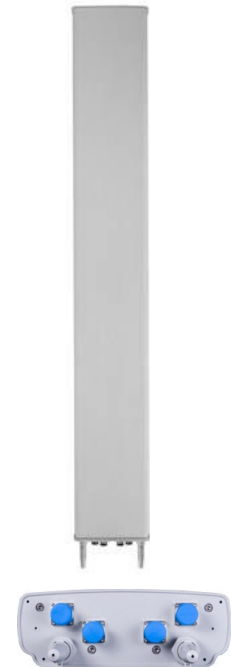
824 - 896	1710 - 2170		
824 - 896	1710 - 1880	1850-1990	1920-2170
H69° V7.9°	H69° V6.2°	H69° V6.1°	H67° V6°
Variable Tilt 0° - 8°	Variable Tilt 0° - 10°	Variable Tilt 0° - 10°	Variable Tilt 0° - 10°

ELECTRICAL SPECIFICATIONS

BAND 850

BROADBAND 1710-2170 MHz

Antenna Model	TGAND3-800TV-EX											
Polarization	± 45°											
Frequency	824 - 896			1710-2170								
	824 - 896	1710 - 1880	1850 - 1990	1920 - 2170								
Horizontal Beamwidth	69°	69°	69°	67°								
Vertical Beamwidth	7.9°	6.2°	6.1°	6°								
Gain (dBi)	T0 T4 T8	T0 T5 T10	T0 T5 T10	T0 T5 T10								
	15.7 16 15.6	16.6 17 16.7	17 17 16.6	17 17.2 17								
Vertical Electrical Tilt	VARIABLE 0°-8°	VARIABLE 0°-10°	VARIABLE 0°-10°	VARIABLE 0°-10°								
Upper Sidelobe Suppression for the 1 st lobe above main beam (dB)	T0 T4 T8	T0 T5 T10	T0 T5 T10	T0 T5 T10								
	16 15 14	19 19 17	19 17 17	19 17 17								
Front-to-Back Ratio @ 180° ± 20° (dB)	> 30	> 30	> 30	> 30								
VSWR	< 1.5 : 1	< 1.5 : 1	< 1.5 : 1	< 1.5 : 1								
Cross Polar Ratio @ ± 60° (dB) <i>Typically</i>	> 10	> 10	> 8	> 8								
Isolation between Ports (dB)	> 30	> 30	> 30	> 30								
Interband Isolation (dB)	> 35 (824-896//1710-2170)											
Maximum Power Per Input (W)	500	250										
Intermodulation (dBc)	< - 150											
Impedance (Ω)	50											



MECHANICAL SPECIFICATIONS

Connectors	4 X 7/16 Female
Connector Position	Bottom
Survival Wind Speed km/h (mph)	200 (125)
Front Windload N @ 160 km/h (lbs @ 100 mph)	1350 (303)
Lateral Windload N @ 160 km/h (lbs @ 100 mph)	270 (61)
Radome Color	Grey, paintable
Humidity	100%
Antenna Weight kg (lbs)	28 (62)
Antenna Dimension mm (in) H X W X D	2530 X 325 X 115 (100 X 13 X 5)

