

# MULTI BAND PANEL ANTENNA (DUAL)

## BAND 900 + BROADBAND 1710 – 2170 MHz

### TGD3-800TV

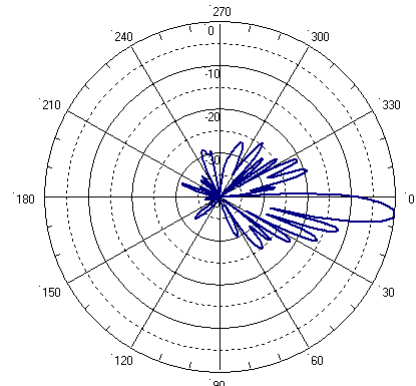
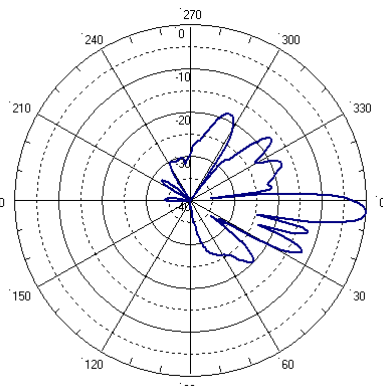
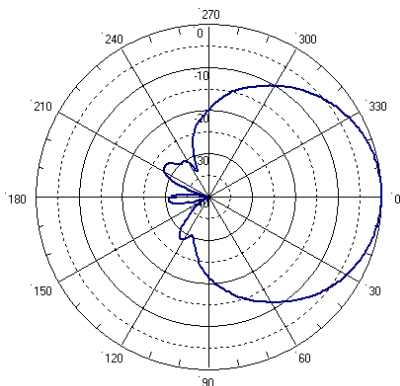
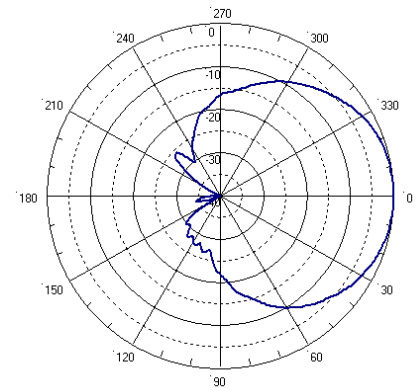
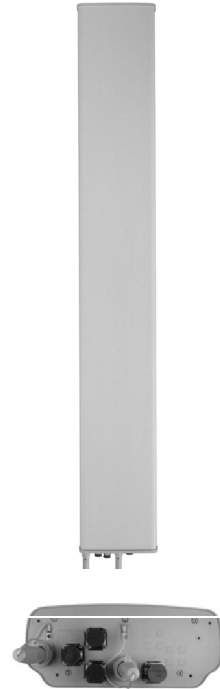
870 - 960	1710 - 2170		
870 - 960	1710-1880	1850-1990	1920-2170
H60° V7.5°	H67° V6.8°	H65° V6.5°	H60° V6.3°
Variable Tilt 2° - 10°	Variable Tilt 2° - 10°	Variable Tilt 2° - 10°	Variable Tilt 2° - 10°

#### ELECTRICAL SPECIFICATIONS

	BAND 900			BROADBAND 1710-2170 MHz			
Antenna Model	TGD3-800TV						
Polarization	± 45°						
Frequency	<b>870 - 960</b>			<b>1710 - 2170</b>			
	870 - 960	1710-1880	1850-1990	1920-2170			
Horizontal Beamwidth	60°	67°	65°	60°			
Vertical Beamwidth	7.5°	6.8°	6.5°	6.3°			
Gain (dBi)	16.6	17.3	17.4	17.5			
Vertical Electrical Tilt	VARIABLE 2°-10°	VARIABLE 2°-10°	VARIABLE 2°-10°	VARIABLE 2°-10°			
Upper Sidelobe Suppression for the 1 <sup>st</sup> lobe above main beam (dB)	<b>T2 T6 T10</b> 19 20 17	<b>T2 T6 T10</b> 20 17 16	<b>T2 T6 T10</b> 20 20 18	<b>T2 T6 T10</b> 20 18 18			
Front-to-Back Ratio @ 180° ± 20° (dB)	> 27	> 25	> 24	> 24			
VSWR	< 1.5 : 1	< 1.5 : 1	< 1.5 : 1	< 1.5 : 1			
Cross Polar Ratio @ -3°dB Beamwidth <i>Typically</i>	>15	>15	>15	>15			
Isolation between Ports (dB)	> 30	> 30	> 30	> 30			
Interband Isolation (dB)	> 40 (870-960//1710-2170)						
Maximum Power Per Input (W)	500	250					
Intermodulation (dBc)	< - 150						
Impedance (Ω)	50						

#### MECHANICAL SPECIFICATIONS

Connectors	4 X 7/16 Female
Connector Position	Bottom
Survival Wind Speed km/h (mph)	200 (125)
Front Windload N @ 160 km/h (lbs @ 100 mph)	1400 (315)
Lateral Windload N @ 160 km/h (lbs @ 100 mph)	330 (74)
Radome Color	Grey, paintable
Humidity	100%
Antenna Weight kg (lbs)	34 (75)
Antenna Dimension mm (in) H X W X D	2615 X 350 X 145 (103 X 14 X 6)



*This antenna is available with variable electrical tilt 4°-14°*