

# MULTI BAND PANEL ANTENNA (QUAD)

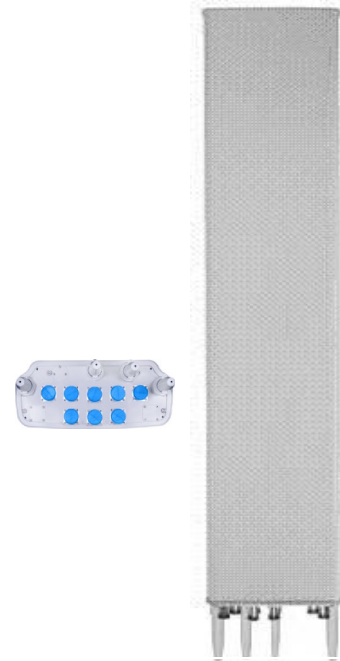
2x BAND (800 + 900) + 2x ULTRA BROADBAND 1710 – 2690 MHz

## L2U2D3-600TV

2 x (790-960)	2 x (1710 – 2690)
H64° V11°	H62.5° V6.2°
Variable Tilt 0° - 12°	Variable Tilt 2° - 10°

### ELECTRICAL SPECIFICATIONS

Antenna Model	L2U2D3-600TV	
Polarization	± 45°	
Frequency	<b>2 X (790 – 960)</b>	<b>2 X (1710 – 2690)</b>
Horizontal Beamwidth	64°	62.5°
Vertical Beamwidth	11°	6.2°
Gain (dBi)	15.5	17.5
Vertical Electrical Tilt	VARIABLE 0° - 12°	VARIABLE 2° - 10°
Upper Sidelobe Suppression for the 1 <sup>st</sup> lobe above main beam (dB)	15	15
Front-to-Back Ratio @ 180° ± 20° (dB)	> 25	> 25
VSWR	< 1.5 : 1	< 1.5: 1
Cross Polar Ratio @ -3°dB Beamwidth Typically	>15	>15
Isolation between Ports (dB)	>25	>30
Interband Isolation (dB)	> 40 (790-960 // 1710-2690) > 30 (1710-2690 // 1710-2690)	
Maximum Power Per Input (W)	> 500	> 300
Intermodulation (dBc)	< - 150	
Impedance (Ω)	50	



### MECHANICAL SPECIFICATIONS

Connectors	8 X 7/16 Female
Connector Position	Bottom
Survival Wind Speed km/h	200
Front Windload N @ 160 km/h	1420
Lateral Windload N @ 160 km/h	390
Radome Color	Grey, paintable
Humidity	100%
Antenna Weight kg (lb)	40 (88)
Antenna Dimension mm (in) H X W X D	2000 X 450 X 200 (78 x 18 x 8)

H&V Pattern/ Broadband

