

MULTI BAND PANEL ANTENNA (QUAD)

BAND 900 + 3x BROADBAND 1710 – 2170 MHz

QB1D3-800TV

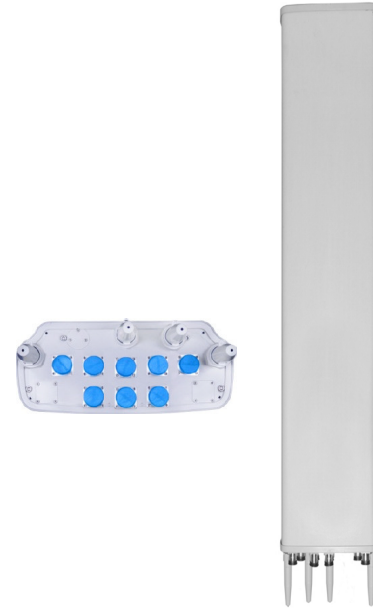
870 - 960	3 X 1710 - 2170		
870 - 960	1710-1880	1850-1990	1920-2170
H60° V7°	H70° V7°	H65° V6.8°	H60° V6.6°
Variable Tilt 3° - 10°	Variable Tilt 2° - 12°	Variable Tilt 2° - 12°	Variable Tilt 2° - 12°

ELECTRICAL SPECIFICATIONS

BAND 900

3 X BROADBAND 1710 – 2170 MHz

Antenna Model	QB1D3-800TV			
Polarization	± 45°			
Frequency	870 - 960	1710-1880	1850-1990	1920-2170
Horizontal Beamwidth	60°	70°	65°	60°
Vertical Beamwidth	7°	7°	6.8°	6.6°
Gain (dBi)				
Top antenna	16.2	16.7	16.6	16.8
Bottom antennas		16.8	16.7	17
Vertical Electrical Tilt	VARIABLE 3°-10°	VARIABLE 2°-12°	VARIABLE 2°-12°	VARIABLE 2°-12°
Upper Sidelobe Suppression for the 1 st lobe above main beam (dB)	T3 T6 T10 19 17 18	T2 T7 T12 17.5 16.5 15	T2 T7 T12 19 17 16	T2 T7 T12 19 17 17
Front-to-Back Ratio @ 180° ± 20° (dB)	20	20	22	23
VSWR	< 1.5 : 1	< 1.5 : 1	< 1.5 : 1	< 1.5 : 1
Cross Polar Ratio @ -3° (dB) Typically	>4	>15		>12
Isolation between Ports (dB)	>30	> 30	> 30	>30
Interband Isolation (dB)	> 40 (870 - 960 // 1710 – 2170) > 31 (1710 – 2170 // 1710 – 2170)			
Maximum Power Per Input (W)	500	250		
Intermodulation @ 43 dBm (dBc)	- 150			
Impedance (Ω)	50			



MECHANICAL SPECIFICATIONS

Connectors	8 X 7/16 Female
Connector Position	Bottom
Survival Wind Speed km/h (mph)	200 (125)
Front Windload N @ 160 km/h (lbs @100 mph)	1400 (315)
Lateral Windload N @ 160 km/h (lbs @100 mph)	330 (74)
Radome Color	Grey, paintable
Humidity	100%
Antenna Weight kg (lbs)	40 (88)
Antenna Dimension mm (in) H X W X D	2615 X 350 X 145 (103 X 14 X 6)

