

# SINGLE BAND PANEL ANTENNA

## BAND 700 MHz

### AT39-643TX

698 - 896
H71° V16°
Fixed Tilt 0°,2°,4°,6°

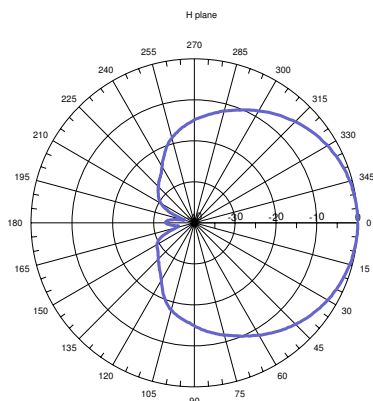
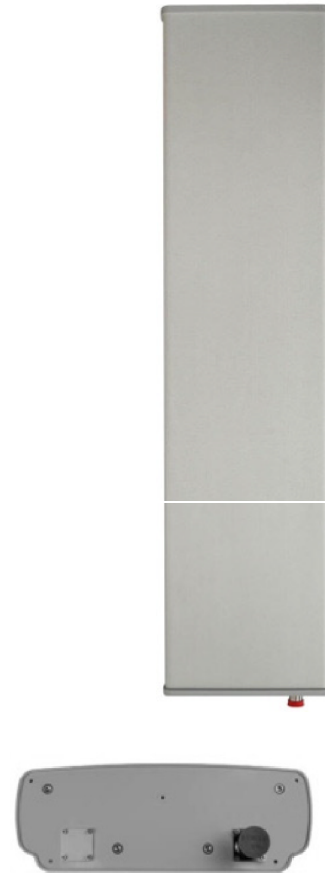
#### ELECTRICAL SPECIFICATIONS

BAND 700

Antenna Model	AT39-643TX
Polarization	Vertical
Frequency (MHz)	<b>698-896</b>
Horizontal Beamwidth	71°
Vertical Beamwidth	16°
Gain (dBi)	14.2
Vertical Electrical Tilt	FIXED 0°,2°,4°,6°
Upper Sidelobe Suppression for the 1 <sup>st</sup> lobe above main beam (dB)	18
Front-to-Back Ratio @ 180° ± 20° (dB)	25
VSWR	< 1.4 : 1
Maximum Power Per Input (W)	500
Intermodulation (dBc)	< - 150
Impedance (Ω)	50

#### MECHANICAL SPECIFICATIONS

Connectors	1 X 7/16 Female
Connector Position	Bottom
Survival Wind Speed km/h (mph)	200 (125)
Front Windload N @ 160 km/h (lbs @100 mph)	655 (147)
Lateral Windload N @ 160 km/h (lbs @100 mph)	125 (28)
Radome Color	Grey, paintable
Humidity	100%
Antenna Weight kg (lbs)	14 (30)
Antenna Dimension mm (in) H X W X D	1275 X 325 X 115 (50 X 13 X 5)



H&V Pattern

