

# SINGLE BAND PANEL ANTENNA

## BAND 700 MHz

### AT39-684TV

698 - 896
H67° V8.5°
Variable Tilt 1°- 9°

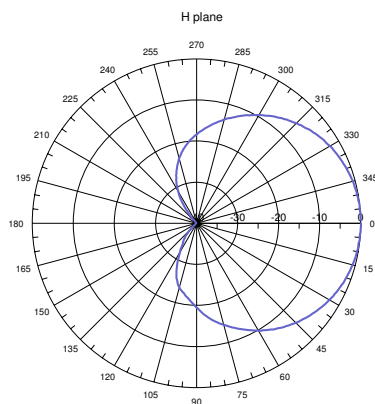
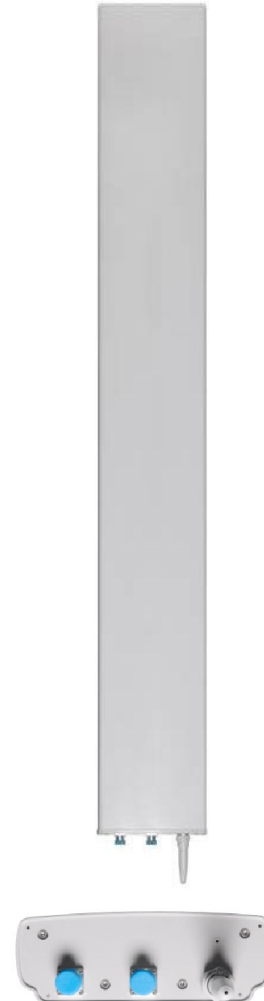
#### ELECTRICAL SPECIFICATIONS

#### BAND 700

Antenna Model	AT39-684TV
Polarization	± 45°
Frequency (MHz)	<b>698-896</b>
Horizontal Beamwidth	67°
Vertical Beamwidth	8.5°
Gain (dBi)	16.2
Vertical Electrical Tilt	VARIABLE 1°-9°
Upper Sidelobe Suppression for the 1 <sup>st</sup> lobe above main beam (dB)	15
Front-to-Back Ratio @ 180° ± 20° (dB)	27
VSWR	< 1.4 : 1
Cross Polar Ratio @ ± 60° (dB) <i>Typically</i>	7
Isolation Between Ports	> 30
Maximum Power Per Input (W)	500
Intermodulation (dBc)	< -150
Impedance (Ω)	50

#### MECHANICAL SPECIFICATIONS

Connectors	2 X 7/16 Female
Connector Position	Bottom
Survival Wind Speed km/h (mph)	200 (125)
Front Windload N @ 160 km/h (lbs @100 mph)	1350 (303)
Lateral Windload N @ 160 km/h (lbs @100 mph)	270 (61)
Radome Color	Grey, paintable
Humidity	100%
Antenna Weight kg (lbs)	25 (55)
Antenna Dimension mm (in) H X W X D	2530 X 325 X 115 (100 X 13 X 5)



H&V Pattern

