

SINGLE BAND PANEL ANTENNA

BAND 800 + 900 MHz

AT40-643TX

790 - 960	
790 - 896	870 - 960
H67° V15°	H63° V14.4°
Fixed Tilt 0°, 2°, 4°, 6°	Fixed Tilt 0°, 2°, 4°, 6°

ELECTRICAL SPECIFICATIONS

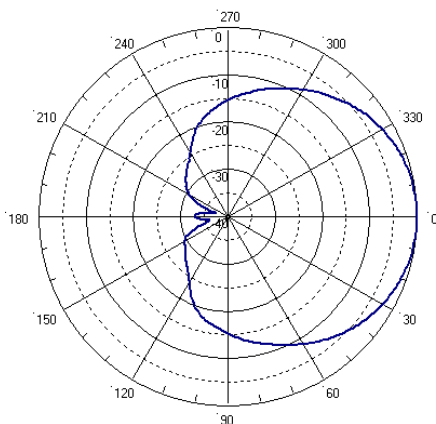
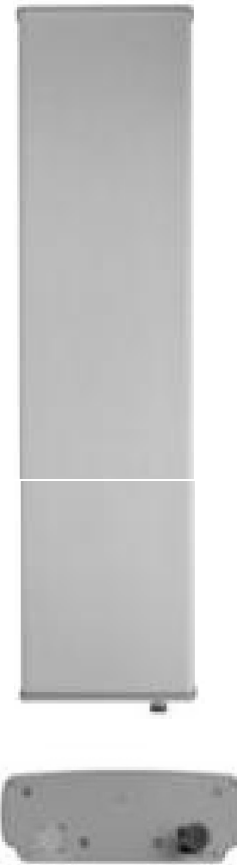
BAND 800

BAND 900

Antenna Model	AT40-643TX	
Polarization	Vertical	Vertical
Frequency (MHz)	790 - 896	870 - 960
Horizontal Beamwidth	67°	63°
Vertical Beamwidth	15°	14.4°
Gain (dBi)	14.5	15
Vertical Electrical Tilt	FIXED 0°, 2°, 4°, 6°	FIXED 0°, 2°, 4°, 6°
Upper Sidelobe Suppression for the 1 st lobe above main beam (dB)	18	18
Front-to-Back Ratio @180° ± 20° (dB)	> 27	> 27
VSWR	< 1.5 : 1	< 1.5 : 1
Maximum Power Per Input (W)	500	500
Intermodulation (dBc)	< - 150	< - 150
Impedance (Ω)	50	50

MECHANICAL SPECIFICATIONS

Connectors	1 X 7/16 Female
Connector Position	Bottom
Survival Wind Speed km/h (mph)	200 (125)
Front Windload N @ 160 km/h (lbs @100 mph)	670 (150)
Lateral Windload N @ 160 km/h (lbs @100 mph)	130 (30)
Radome Color	Grey, paintable
Humidity	100%
Antenna Weight kg (lbs)	12 (26)
Antenna Dimension mm (in) H X W X D	1340 X 325 X 115 (53 X 13 X 5)



H&V Pattern

