

SINGLE BAND PANEL ANTENNA

BAND 800 + 900 MHz

AT40-664TV

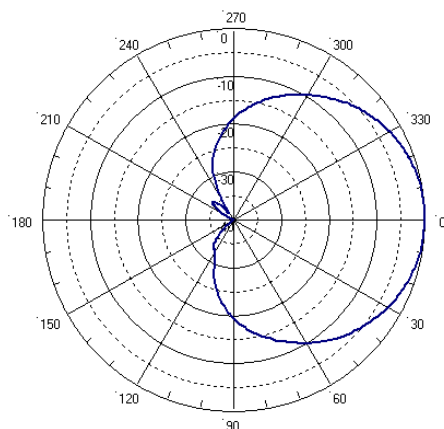
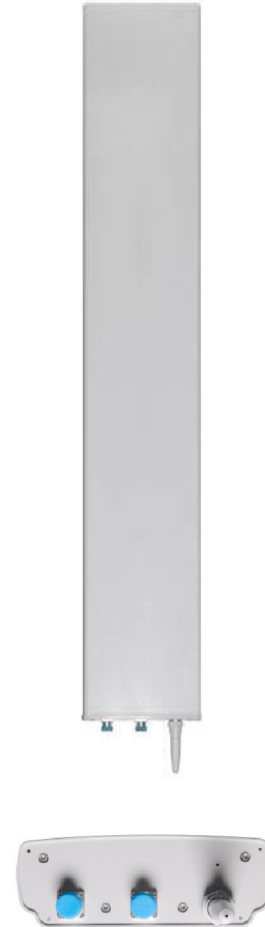
790 - 960	
790 – 896	870 - 960
H67° V10.9°	H63° V10.5°
Variable Tilt 0° - 8°	Variable Tilt 0° - 8°

ELECTRICAL SPECIFICATIONS

	BAND 800			BAND 900
Antenna Model	AT40-664TV			
Polarization	± 45°			± 45°
Frequency (MHz)	790 - 896			870 - 960
Horizontal Beamwidth	67°			63°
Vertical Beamwidth	10.9°			10.5°
Gain (dBi)	T0 16	T5 16	T10 15.7	16.5
Vertical Electrical Tilt	VARIABLE 0°-8°			VARIABLE 0°-8°
Upper Sidelobe Suppression for the 1 st lobe above main beam (dB)	T0 18	T5 17	T10 17	17
Front-to-Back Ratio @180° ± 20° (dB)	> 27			> 27
VSWR	< 1.5 : 1			< 1.5 : 1
Cross Polar Ratio @ ± 60° (dB) <i>Typically</i>	> 10			> 10
Isolation Between Ports	> 30			> 30
Maximum Power Per Input (W)	500			500
Intermodulation (dBc)	< - 150			< - 150
Impedance (Ω)	50			50

MECHANICAL SPECIFICATIONS

Connectors	2 X 7/16 Female	
Connector Position	Bottom	
Survival Wind Speed	km/h (mph)	200 (125)
Front Windload		
N @ 160 km/h	(lbs @100 mph)	1045 (235)
Lateral Windload		
N @ 160 km/h	(lbs @100 mph)	205 (46)
Radome Color	Grey, paintable	
Humidity	100%	
Antenna Weight	kg (lbs)	20 (44)
Antenna Dimension	mm (in) H X W X D	
	1985 X 325 X 115 (78 X 13 X 5)	



H&V Pattern

