

SINGLE BAND PANEL ANTENNA

BAND 800 + 900 MHz

AT40-683TX

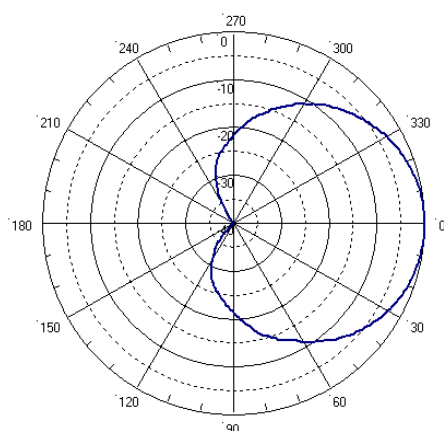
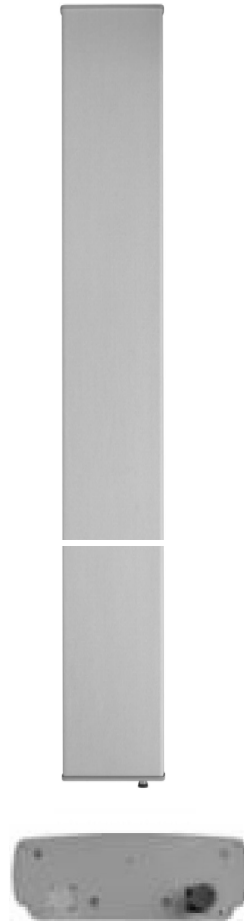
790 - 960	
790 - 896	870 - 960
H67° V7.8°	H63° V7.4°
Fixed Tilt 0°, 2°, 4°, 6°	Fixed Tilt 0°, 2°, 4°, 6°

ELECTRICAL SPECIFICATIONS

	BAND 800	BAND 900
Antenna Model	AT40-683TX	
Polarization	Vertical	Vertical
Frequency (MHz)	790 - 896	870 - 960
Horizontal Beamwidth	67°	63°
Vertical Beamwidth	7.8°	7.4°
Gain (dBi)	17	17.5
Vertical Electrical Tilt	FIXED 0°, 2°, 4°, 6°	FIXED 0°, 2°, 4°, 6°
Upper Sidelobe Suppression for the 1 st lobe above main beam (dB)	17	17
Front-to-Back Ratio @ 180° ± 20° (dB)	> 30	> 30
VSWR	< 1.5 : 1	< 1.5 : 1
Maximum Power Per Input (W)	500	500
Intermodulation (dBc)	< - 150	< - 150
Impedance (Ω)	50	50

MECHANICAL SPECIFICATIONS

Connectors	1 X 7/16 Female
Connector Position	Bottom
Survival Wind Speed km/h (mph)	200 (125)
Front Windload N @ 160 km/h (lbs @100 mph)	1350 (303)
Lateral Windload N @ 160 km/h (lbs @100 mph)	270 (61)
Radome Color	Grey, paintable
Humidity	100%
Antenna Weight kg (lbs)	22 (48)
Antenna Dimension mm (in) H X W X D	2530 X 325 X 115 (100 X 13 X 5)



H&V Pattern

