

SINGLE BAND PANEL ANTENNA

BAND 800 + 900 MHz

AT40-684TV

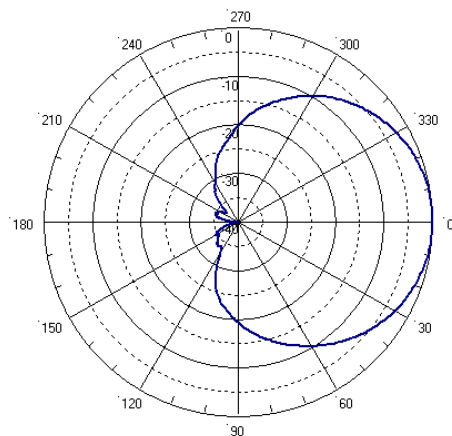
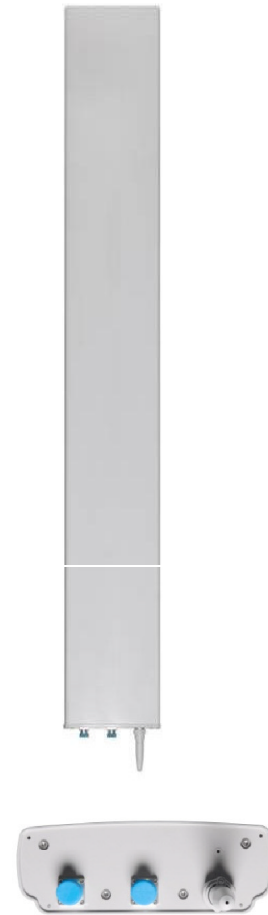
| 790 - 960 | |
|--------------------------|--------------------------|
| 790 - 896 | 870 - 960 |
| H67° V7.6° | H63° V7.1° |
| Variable Tilt 0° - 8° | Variable Tilt 0° - 8° |

ELECTRICAL SPECIFICATIONS

| | BAND 800 | | | BAND 900 |
|---|-------------------|-------------------|-------------------|------------------|
| Antenna Model | AT40-684TV | | | |
| Polarization | ± 45° | | | ± 45° |
| Frequency (MHz) | 790 - 896 | | | 870 - 960 |
| Horizontal Beamwidth | 67° | | | 63° |
| Vertical Beamwidth | 7.6° | | | 7.1° |
| Gain (dBi) | T0 16.2 | T4 16.7 | T8 16.5 | 17.5 |
| Vertical Electrical Tilt | VARIABLE 0°-8° | | | VARIABLE 0°-8° |
| Upper Sidelobe Suppression for the 1 st lobe above main beam (dB) | T0 17 | T4 17 | T8 17 | 17 |
| Front-to-Back Ratio @180° ± 20° (dB) | > 25 | | | > 30 |
| VSWR | < 1.5 : 1 | | | < 1.5 : 1 |
| Cross Polar Ratio @ ± 60° (dB) <i>Typically</i> | > 7 | | | > 7 |
| Isolation Between Ports | > 30 | | | > 30 |
| Maximum Power Per Input (W) | 500 | | | 500 |
| Intermodulation (dBc) | < - 150 | | | < - 150 |
| Impedance (Ω) | 50 | | | 50 |

MECHANICAL SPECIFICATIONS

| | | |
|---------------------|---------------------------------|-----------|
| Connectors | 2 X 7/16 Female | |
| Connector Position | Bottom | |
| Survival Wind Speed | km/h (mph) | 200 (125) |
| Front Windload | 1350 (303) | |
| N @ 160 km/h | (lbs @100 mph) | |
| Lateral Windload | 270 (61) | |
| N @ 160 km/h | (lbs @100 mph) | |
| Radome Color | Grey, paintable | |
| Humidity | 100% | |
| Antenna Weight | kg (lbs) | 24 (53) |
| Antenna Dimension | 2530 X 325 X 115 (100 X 13 X 5) | |
| mm (in) H X W X D | | |



H&V Pattern

