

SINGLE BAND PANEL ANTENNA BAND 900 MHz

AT42-646 TX

870 - 960
H88° V14.5°
Fixed Tilt 0°,2°,4°,6°

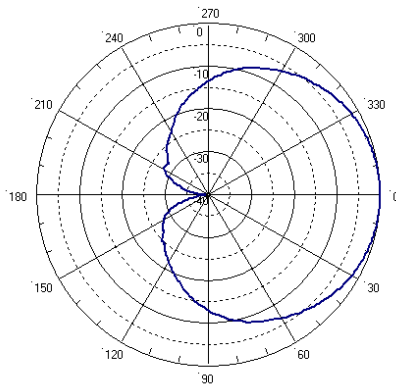
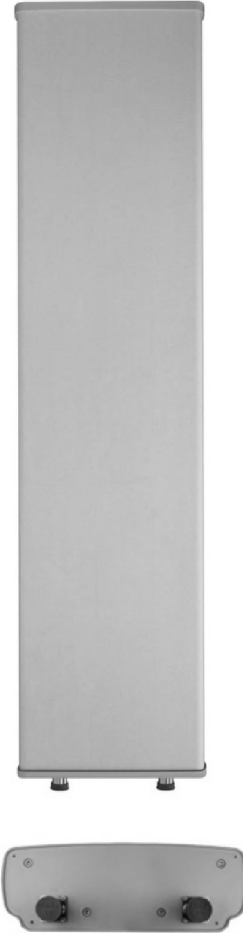
ELECTRICAL SPECIFICATIONS

BAND 900

Antenna Model	AT42-646TX
Polarization	± 45°
Frequency (MHz)	870 - 960
Horizontal Beamwidth	88°
Vertical Beamwidth	14.5°
Gain (dBi)	14
Vertical Electrical Tilt	FIXED 0°,2°,4°,6°
Upper Sidelobe Suppression for the 1 st lobe above main beam (dB)	18
Front-to-Back Ratio @ 180° ± 20° (dB)	> 23
VSWR	< 1.4 : 1
Cross Polar Ratio @ ± 60° (dB) <i>Typically</i>	> 12
Isolation Between Ports	> 30
Maximum Power Per Input (W)	500
Intermodulation (dBc)	< -150
Impedance (Ω)	50

MECHANICAL SPECIFICATIONS

Connectors	2 X 7/16 Female
Connector Position	Bottom
Survival Wind Speed km/h (mph)	200 (125)
Front Windload N @ 160 km/h (lbs @100 mph)	670 (150)
Lateral Windload N @ 160 km/h (lbs @100 mph)	130 (30)
Radome Color	Grey, paintable
Humidity	100%
Antenna Weight kg (lbs)	12 (26)
Antenna Dimension mm (in) H X W X D	1340 X 325 X 115 (53 X 13 X 5)



H&V Pattern

